



south gippsland homes

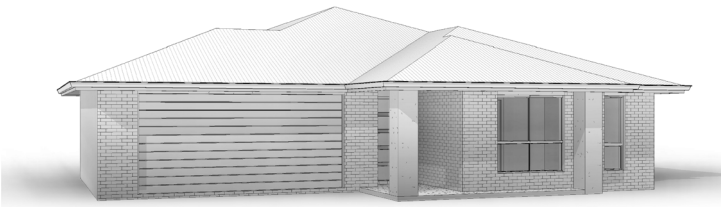
Tarwin 24

ASCENT

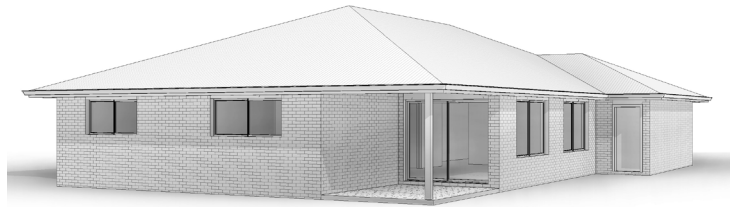
Cleverly designed the Tarwin 24 perfectly blends open plan living with private personal space.



Exterior Length	20.30m
Exterior Width	13.04m
Total House Area	229.88m ²
Squares	24.75sq
Kitchen	3790mm x 2700mm
Dining	3300mm x 3960mm
Living	4570mm x 4620mm
Rumpus	3500mm x 3810mm
Bed 1	4150mm x 4760mm
Bed 2	2900mm x 2980mm
Bed 3	2850mm x 2980mm
Bed 4	3000mm x 3470mm
Bath	1810mm x 2980mm
Alfresco	3590mm x 2850mm
Garage	6000mm x 6000mm



Standard Facade



Perspective 2