



south gippsland homes

Foster 21

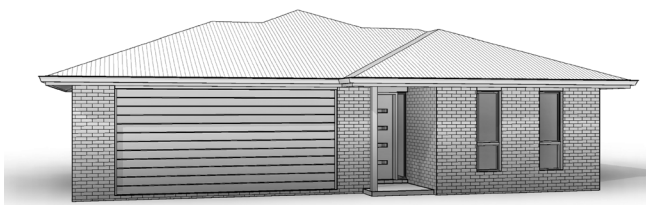
ASCENT

For the ever growing family the Foster 21 offers plenty of space. With 2 living rooms and 3 spacious bedrooms it will cater for the busy family of today.

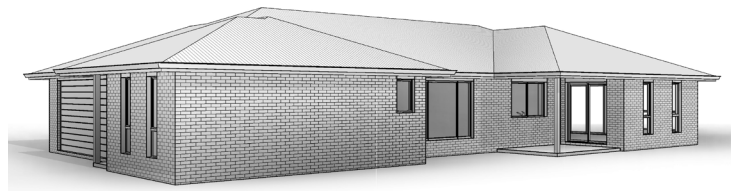


Exterior Length	18.74m
Exterior Width	12.93m
Total House Area	198.53m ²
Squares	21.37sq

Kitchen	2900mm x 4890mm
Dining	2900mm x 4190mm
Living	4500mm x 3750mm
Family	4670mm x 4890mm
Bed 1	3600mm x 3600mm
Bed 2	3000mm x 3000mm
Bed 3	3300mm x 3000mm
Bath	2100mm x 2960mm
Patio	3210mm x 2540mm
Garage	6300mm x 6000mm



Standard Facade



Perspective 2